



LEF 430-00-LC1

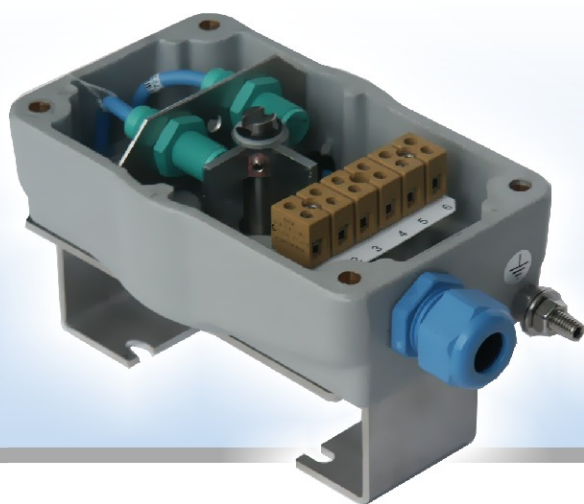
Box II 2 GD - EEx ia II C T6

ATEX



03 ATEX 0182 x

Détecteur NAMUR TURCK



CE

✓ DESCRIPTION

electric switch box with 1 or 2 namur sensors

✓ CONFORMITY

Directive 94/9/CE

- **certificate of conformity :**

INERIS 03 ATEX 0182X

- **Marking :**

II 2 G ou 2 GD EExia IICT6 ou T5

CE

✓ BOX

- **materials**

cast aluminium (epoxy coating)

- **protection**

IP 66/67

- **temperature :**

-20°C... + 40°C

- **position indicator :**

- On the top of the box

- **mounting :**

- according to VDI-VDE 3845

- **shaft and included bracket :**

- stainless steel

✓ NAMUR SENSOR

1 or 2 Namur Sensor EEx : BI2-GI2-Y1X TURCK

