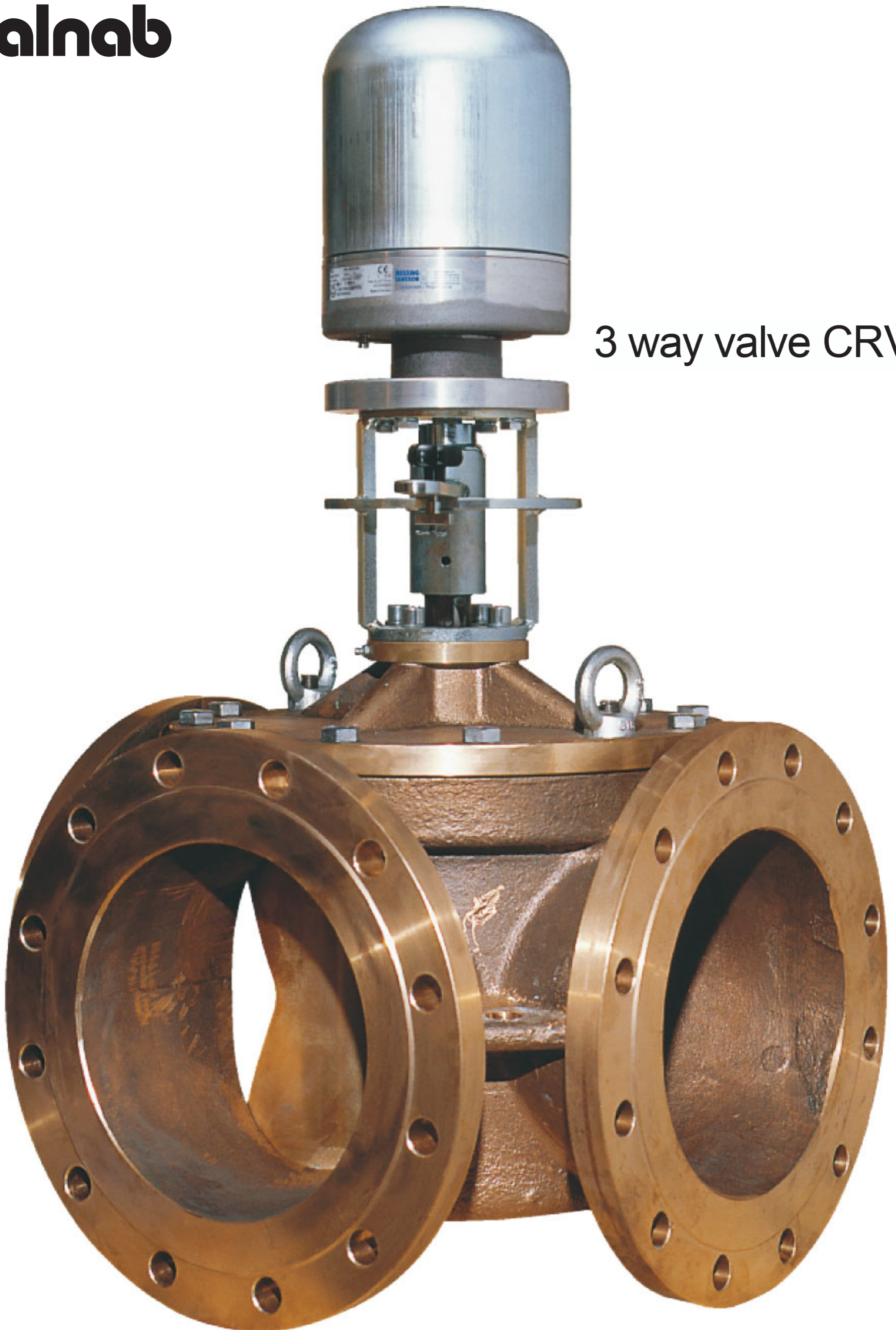
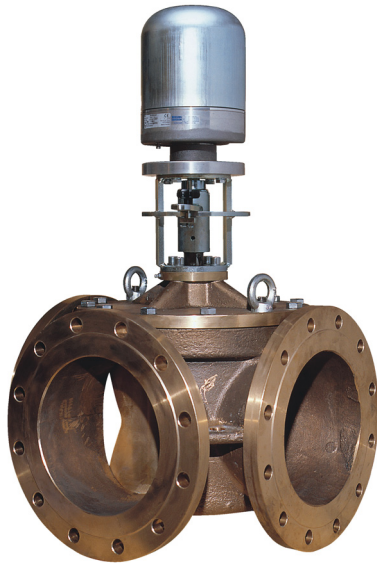


alnab



3 way valve CRV3



The CRV3 valve is especially used in marine heating or cooling systems with large water quantities and lubrication oil systems. Usually equipped with electric actuator 375/E41 with lockable handlever.

On request also with pneumatic or hydraulic actuators or other electric actuators.

Kv-values, torque, weights (excl. actuator)

DN	50	65	80	100	125
*Kvs m3/h	66/52	106/83	170/140	260/210	410/330
Torque Nm	4,0	4,0	4,0	4,0	4,0
Weight kg	23	30	40	50	70

DN	150	200	250	300	350	400
*Kvs m3/h	580/470	1040/840	1640/1320	2380/1920	3200/2580	4230/3410
Torque Nm	4,0	8,15 8,2	10,2	10,2	20,5	30,6
Weight kg	80	130	180	230	310	390

*Kv values for port 1-3/port 1-2

Technical data

Material

CRV3-1

House and cover in cast iron GG25

Slide in bronze Rg5

Shaft in stainless steel 316

CRV3-2

House and slide in bronze Rg5

Shaft in stainless steel 316

CRV3-3

House and cover in nodular iron GGG40

Slide in bronze Rg5

Shaft in stainless steel 316

CRV3-5

House and cover in cast steel GS-C25

Slide in bronze Rg5

Shaft in stainless steel 316

Nominal pressure

Standard PN 10

Option PN 16 for DN 50-200

Applications

Sea water cooling system of M.E.

Sea water cooling system of AA.EE.

F.W. centralized cooling L.T. system.

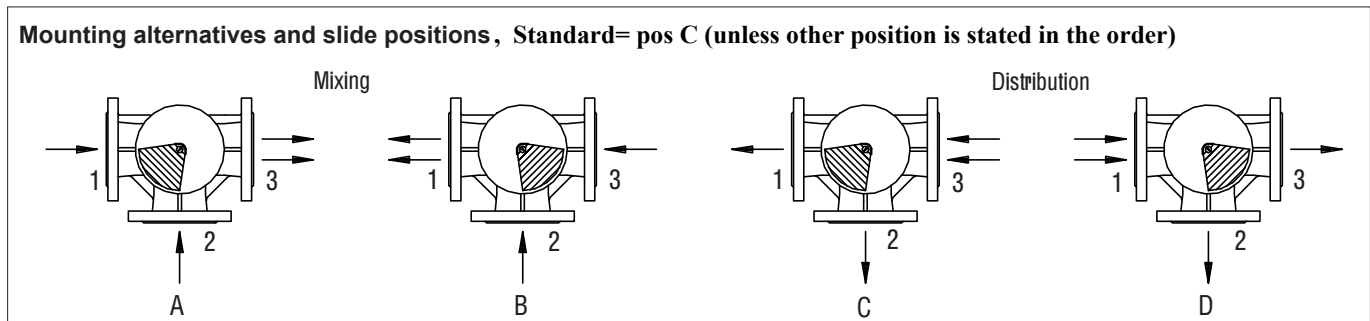
F.W. cooling H.T. for M.E. cylinders.

F.W. control heat for F.W. generators.

Turbo charge air cooling.

F.W. cooling H.T. for AA.EE. cylinders.

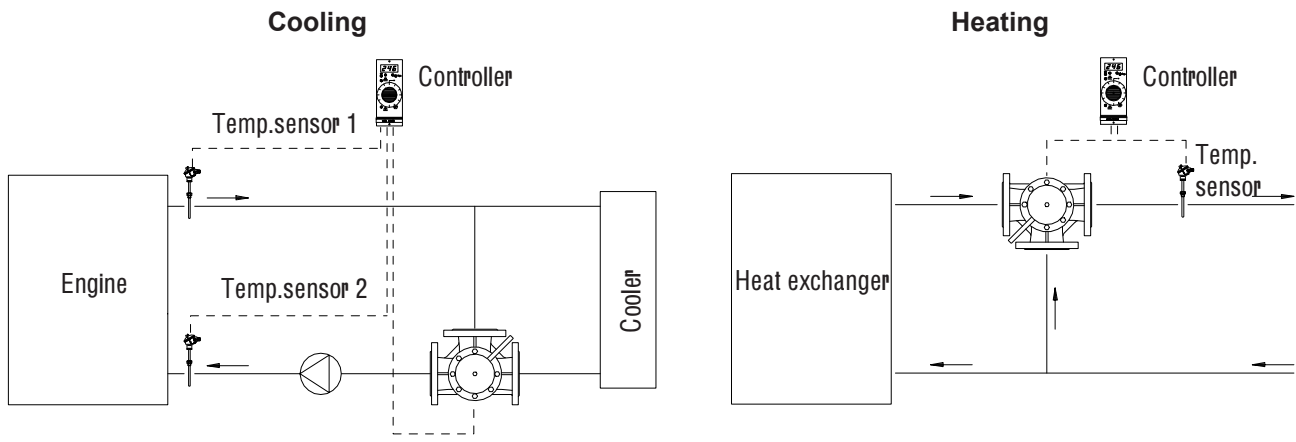
M.E. Lubrication oil temperature system.



Note! Special slide for controlling between connection 1 and 3 is available on request

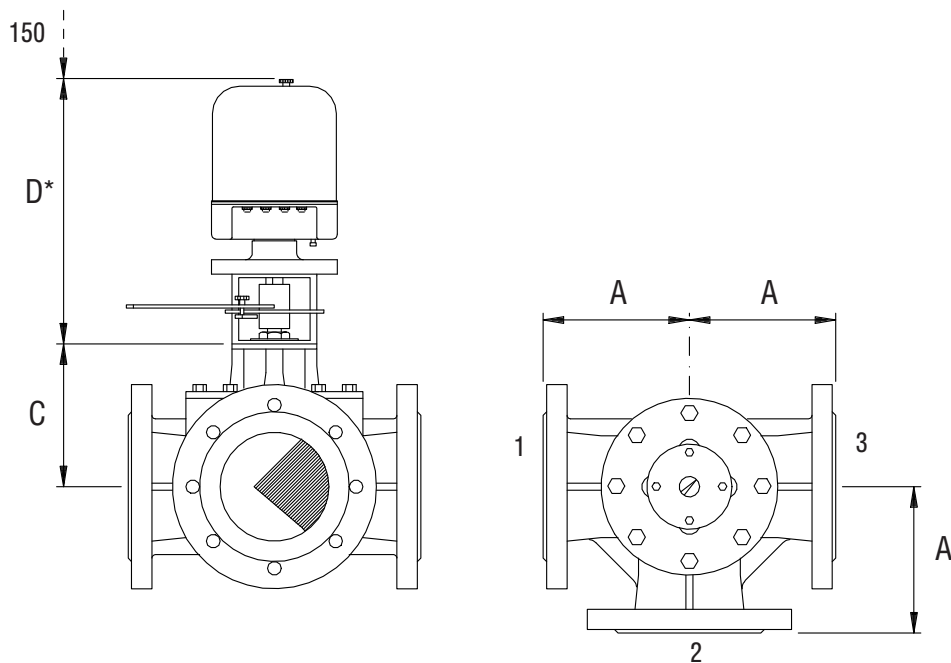
Datasheet 5:5e

Control system



It is not recommended to install the valve with the actuator below the horizontal line. This is to avoid damage if a leakage should appear at the valve shaft.

Dimensional drawing

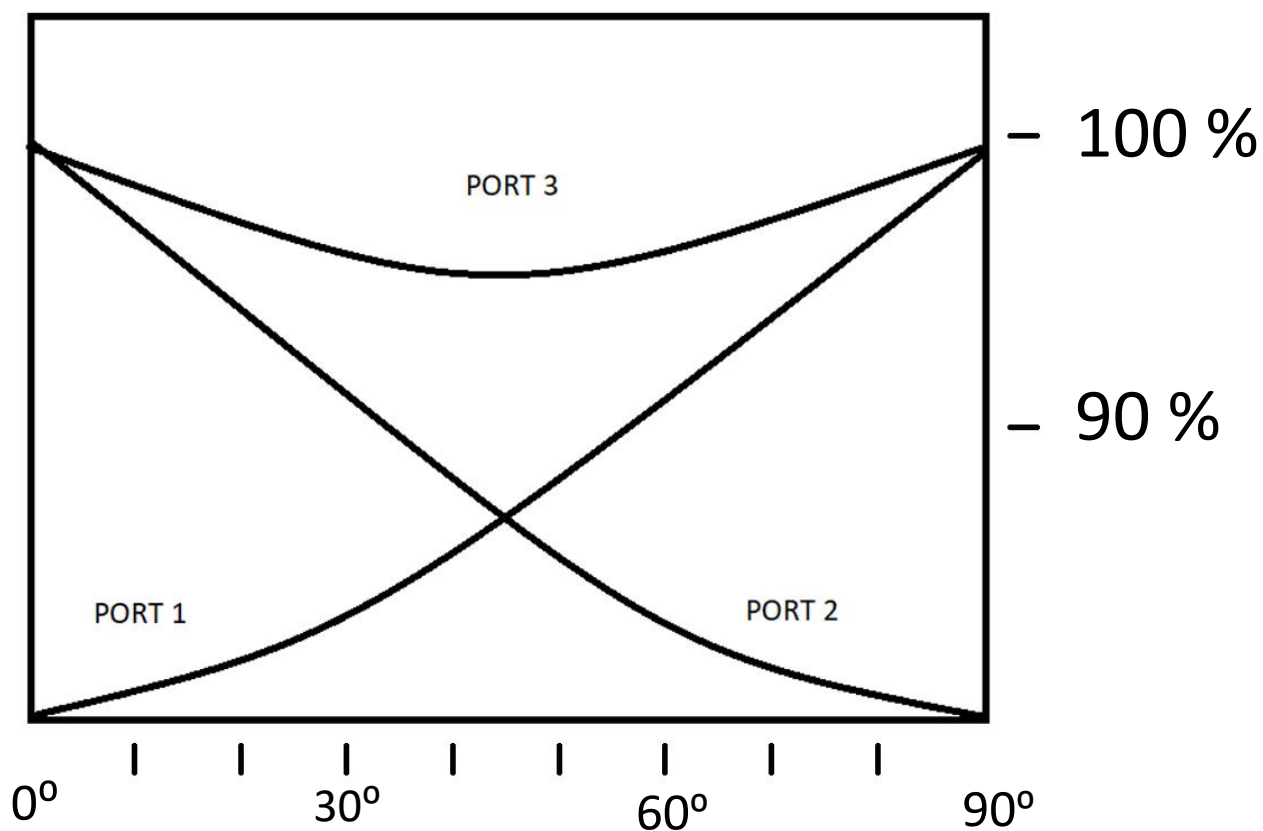


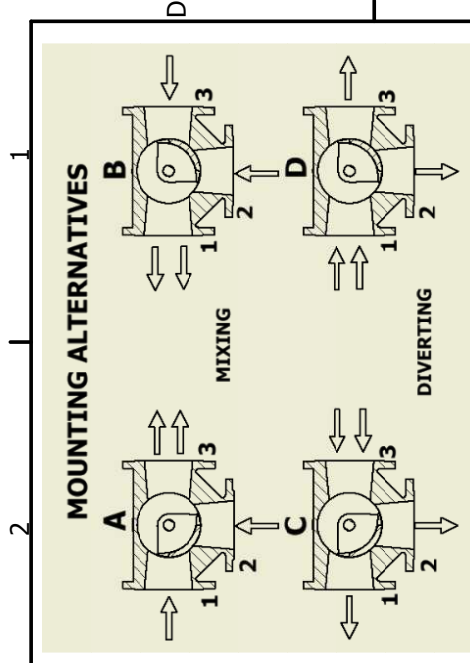
Dimensions in mm

DN	50	65	80	100	125	150	200	250	300	350
A	115	145	150	150	175	200	225	260	300	350
C	89	98	185	185	190	190	245	255	275	320
D	452	452	452	452	452	452	452	452	452	452

The dimension changes when other actuator than 375/E41 is used.

The CRV3 valve has a V-shaped opening in the slide which provides a logarithmic characteristic. This is a great advantage when aiming at a smooth control.

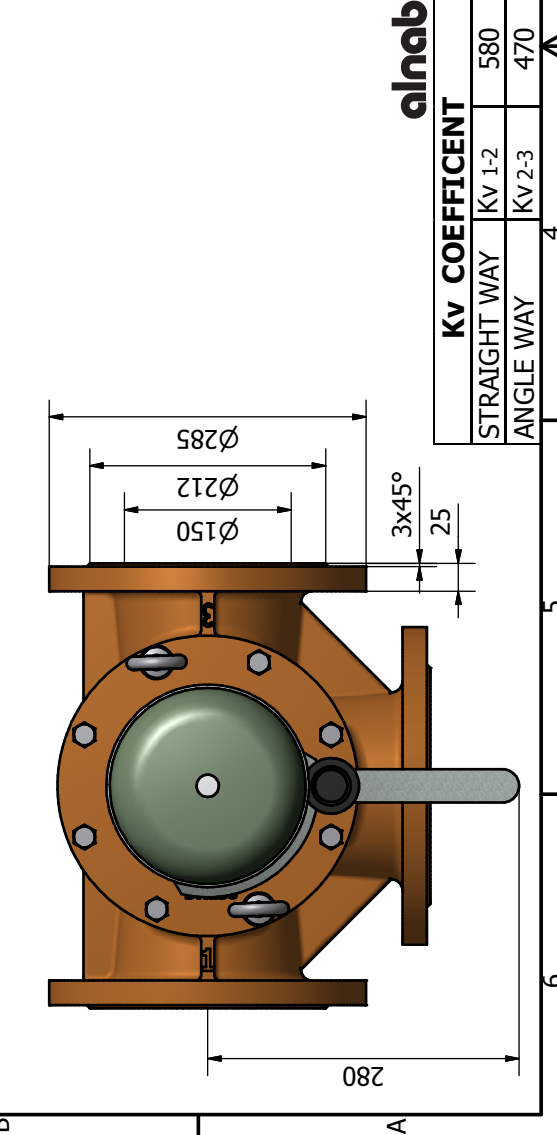
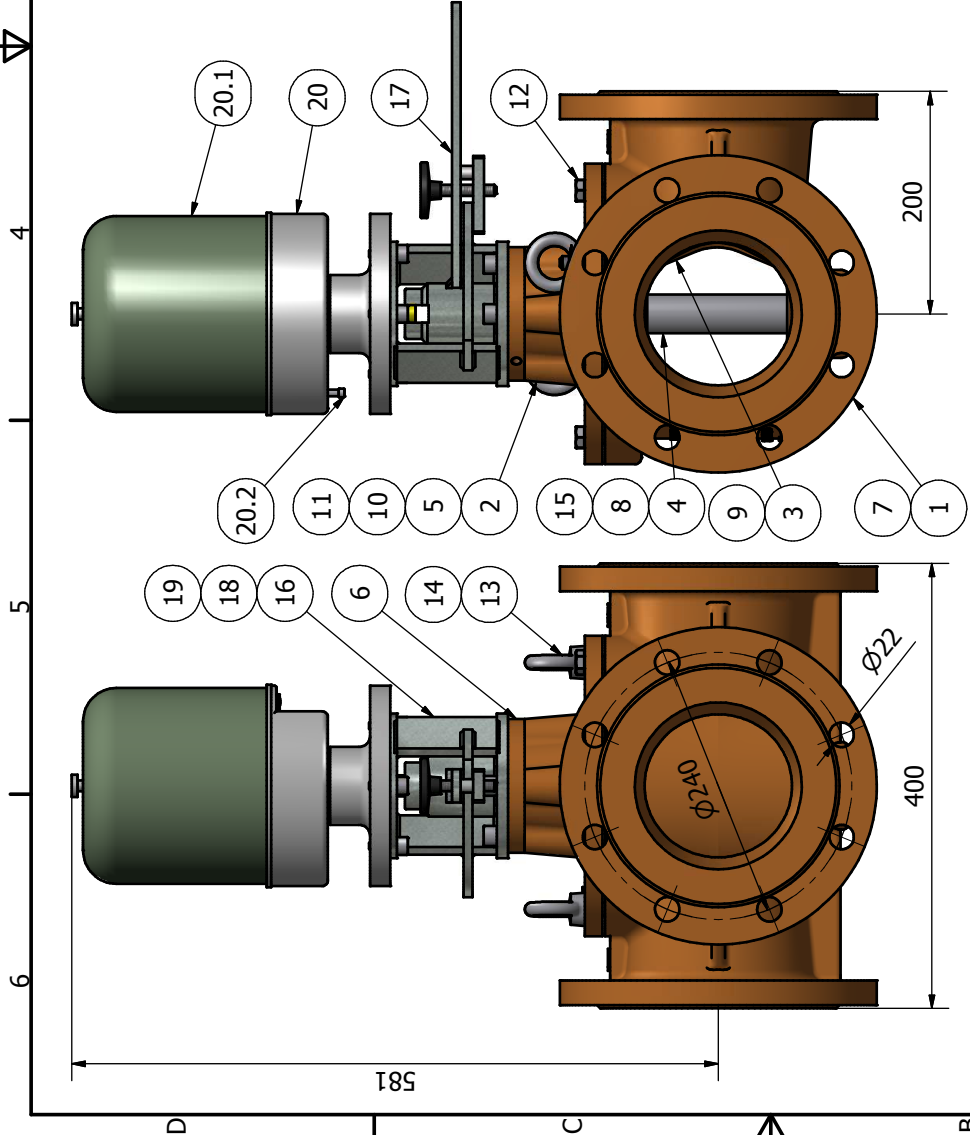




ITEM	QTY	DESCRIPTION	CODE	MATERIAL
20.2	1	Gear Release Button		
20.1	1	Actuator Cover		
20	1	Elec. Actuator	CRV37541201401	BAELZ 375/E41
19	4	Support Bolt	CRV31025190310	Steel, Mild
18	4	Support Bolt	CRV31240180301	Steel, Mild
17	1	Hand Lever	CRV30035170301	Steel, Mild
16	1	Actuator Support	CRV30035160301	Steel, Mild
15	1	Key	CRV31040150301	Steel, Mild
14	2	Eye Nut	CRV30012140301	Steel, Mild
13	2	Stud	CRV31270130301	Steel, Mild
12	6	Cover Bolt	CRV31240120301	Steel, Mild
11	1	O Ring	CRV30495111001	NBR
10	3	O Ring	CRV30342101001	NBR
9	1	Cyl. Pin	CRV30855090501	Stainless Steel
8	1	Key	CRV31040080501	Stainless Steel
7	1	Body Gasket	CRV30150070901	Asbestos Free
6	1	Gland Flange	CRV32035060601	Bronze Rg-5
5	1	Gland	CRV30035050601	Bronze Rg-5
4	1	Shaft	CRV30150040501	St. Steel/Aisi-316
3	1	Slide	CRV30150030601	Bronze CuSn5ZnPb
2	1	Cover	CRV32150020601	Bronze CuSn5ZnPb
1	1	Body	CRV32150100603	Bronze CuSn5ZnPb
ITEM	QTY	DESCRIPTION	CODE	MATERIAL

PARTS LIST

Customer:	Date:	Name:	Scale:
Order:	Draft: 25/10/2011	J. H.	THERMOSTATIC VALVE CRV3-2
Project:	Check: 06/11/2014	J. B.	DN-150 PN-10/16 W/ ELE. ACT. BAE LZ
	Apprv: 06/11/2014	J. B.	Drawing No: CRV3-2-665-3-0010-0150-C
			Sheets: 1
			Format: A3

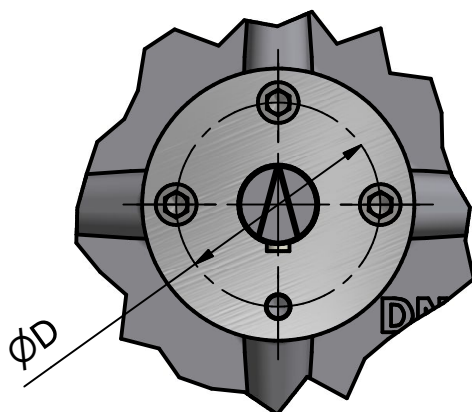
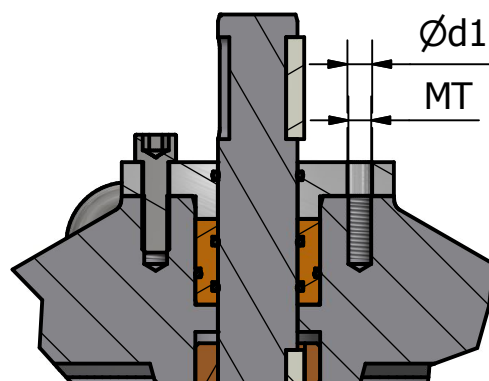
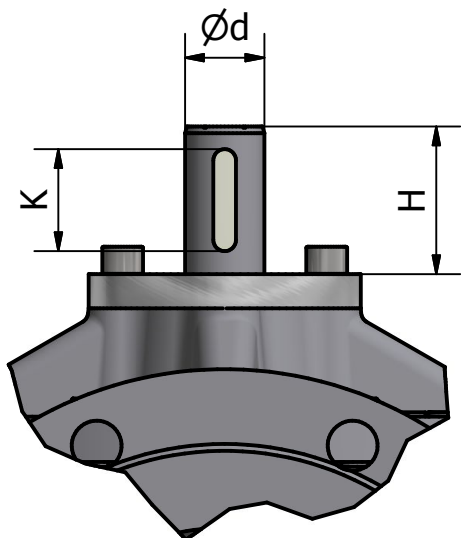


alnab

KV COEFFICIENT	
STRAIGHT WAY	KV 1-2 580
ANGLE WAY	KV 2-3 470

This drawing is owned by ROSSING JANSOON AB and prohibited its distribution and use by third parties without written authorization

REVIEW		
REV	DESCRIPTION	DATE
1	DN-50 Data	20/10/2016



Dimensions						
DN	d	H	D	d1	MT	K (DIN 6885)
50	18	56	50	-	M6	6 x 6 x 25
65	20	61	70	9	M8	6 x 6 x 25
80	25	61	70	9	M8	8 x 7 x 32
100	35	61	90	13	M12	10 x 8 x 40
125	35	61	90	13	M12	10 x 8 x 40
150	35	65	90	13	M12	10 x 8 x 40
200	35	65	90	13	M12	10 x 8 x 45
250	35	65	90	13	M12	10 x 8 x 45
300	35	65	90	13	M12	10 x 8 x 45
350	50	78	120	13	M12	10 x 8 x 56
400	50	78	120	13	M12	10 x 8 x 56

Customer:	Date: 26/09/2010	Name: J. H.	Title: CRV3 THERMOSTATIC VALVES RJ COUPLING DIMENSIONS	Scale:
Order:	Check: 30/08/2015	J. B.		
	Apprv: 30/08/2015	J. B.		
Tolerances: ISO 2768 Medium	Qty:		Drawing No: CRV3-0-000-0-0050-0400	Sheets: 1
	Weight Kg:		File: CRV3-0 DN-200 PN-10 FREE SHAFT.iam	Format: A4

SPARE PARTS LIST

ITEM	QTY	PART	DN-80	DN-100	DN-125	DN-150	DN-200	DN-250	DN-300	MATERIAL
1	1	Body	CRV30080010003	CRV30100010003	CRV30125010003	CRV30150010003	CRV30200010003	CRV30250010003	CRV30300010003	See Table II
2	1	Cover	CRV30080020001	CRV30100020001	CRV30125020001	CRV30150020001	CRV30200020001	CRV30250020001	CRV30300020001	See Table II
3	1	Slide (2)	CRV30080030601	CRV30100030601	CRV30125030601	CRV30150030601	CRV30200030601	CRV30250030601	CRV30300030601	See Table II
4	1	Shaft (2)	CRV30080040501	CRV30100040501	CRV30125040501	CRV30150040501	CRV30200040501	CRV30250040501	CRV30300040501	St. Steel AISI-316
5	1	Gland (1)	CRV30025050601	CRV30035050601	CRV30035050601	CRV30035050601	CRV30035050601	CRV30035050601	CRV30035050601	Bronze Rg-5
6	1	Gland Flange	CRV30080060001	CRV30035060001	CRV30035060001	CRV30035060001	CRV30035060001	CRV30035060001	CRV30035060001	See Table II
7	1	Gasket (1)	CRV30080070901	CRV30100070901	CRV30125070901	CRV30150070901	CRV30200070901	CRV30250070901	CRV30300070901	Asbestos Free
8	1	Key (2)	CRV30832080501	CRV31040080501	CRV31040080501	CRV31040080501	CRV31045080501	CRV31045080501	CRV31045080501	Stainless Steel
9	1	Cyl. Pin (2)	CRV30855090501	CRV30855090501	CRV30855090501	CRV30855090501	CRV30855090501	CRV30855090501	CRV30855090501	Stainless Steel
10	3	O Ring (1)	CRV30342101001	CRV30342101001	CRV30342101001	CRV30342101001	CRV30342101001	CRV30342101001	CRV30342101001	NBR
11	1	O Ring (1)	CRV30365111001	CRV30495111001	CRV30495111001	CRV30495111001	CRV30495111001	CRV30495111001	CRV30495111001	NBR
12	6	Cover Bolt	CRV31030120301	CRV31230120301	CRV31235120301	CRV31235120301	CRV31240120301	CRV31650120301	CRV31650120301	Steel, Mild
13	2	Stud	CRV31270130301	CRV31270130301	CRV31270130301	CRV31270130301	CRV31270130301	CRV31690130301	CRV31690130301	Steel, Mild
14	2	Eye Nut	CRV30012140301	CRV30012140301	CRV30012140301	CRV30012140301	CRV30012140301	CRV30016140301	CRV30016140301	Steel, Mild
15	2	Key	CRV30832150301	CRV31040150301	CRV31040150301	CRV31040150301	CRV31045150301	CRV31045150301	CRV31045150301	Steel, Mild
16	2	False Key (1)	CRV30832151901	CRV31040151901	CRV31040151901	CRV31040151901	CRV31045151901	CRV31045151901	CRV31045151901	OPTIONAL
18	4	Support Bolt	CRV30830180301	CRV31240180301	CRV31240180301	CRV31240180301	CRV31240180301	CRV31240180301	CRV31240180301	Steel, Mild

(1) FIRST LEVEL: RECOMMENDED SPARE PARTS KIT (Item. 15.1 is optional)
 (2) SECOND LEVEL: INTERNAL PARTS KIT + FIRST LEVEL

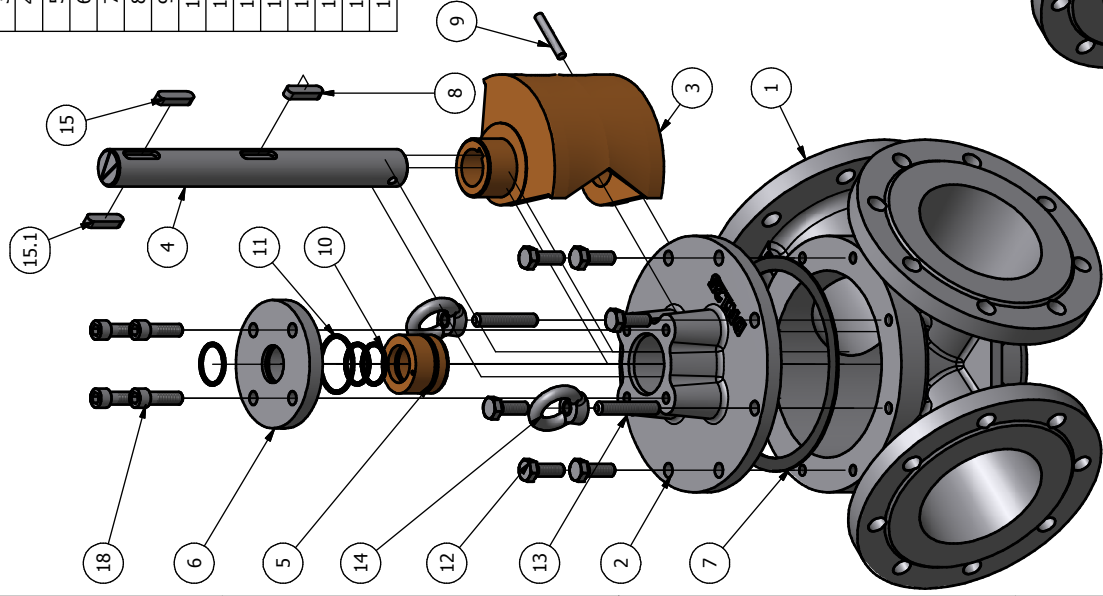
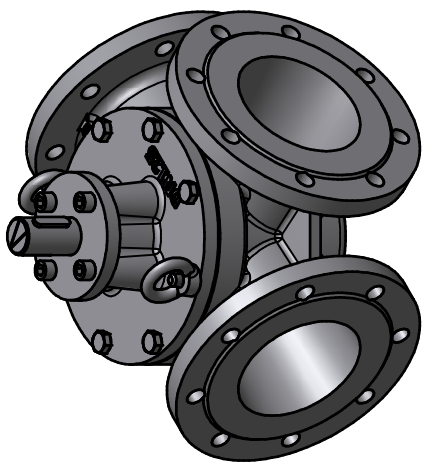


TABLE II

Valve Type	Body Item: 1			Cover Item: 2			Slide Item: 3			Gland Flange Item: 6		
	Material	Code	Material	Code	Material	Code	Material	Code	Material	Code	Material	Code
CRV/3-1	Cast Iron GG-25	CRV31XXX010003	Cast Iron GG-25	CRV31XXX020010	Bronze Rg-5	CRV30XXX030601	Cast Iron	CRV30XXX060001	Bronze Rg-5	CRV30XXX030601	Cast Iron	CRV30XXX060001
CRV/3-2	Bronze Rg-5	CRV32XXX010603	Bronze Rg-5	CRV32XXX020610	Bronze Rg-5	CRV30XXX030601	Bronze Rg-5	CRV30XXX060001	Bronze Rg-5	CRV30XXX030601	Bronze Rg-5	CRV30XXX060001
CRV/3-3	Ductil Iron GGG-40	CRV33XXX010703	Ductil Iron GGG-40	CRV33XXX020110	Bronze Rg-5	CRV30XXX030601	Cast Iron	CRV30XXX060001	Bronze Rg-5	CRV30XXX030601	Cast Iron	CRV30XXX060001
CRV/3-4	St. Steel CF-8M	CRV34XXX010503	St. Steel CF-8M	CRV34XXX020510	St. Steel CF-8M	CRV34XXX030501	St. Steel	CRV34XXX060501	St. Steel	CRV34XXX030501	St. Steel	CRV34XXX060501
CRV/3-5	Cast Steel GC-C25	CRV35XXX010203	Cast Steel GC-C25	CRV35XXX020210	Bronze Rg-5	CRV30XXX030601	Cast Steel	CRV35XXX0601	Cast Steel	CRV35XXX030601	Cast Steel	CRV35XXX0601

BODY CODE EXPLANATION

Valve Type ND Item Material PN
 CRV3 X XX XX XX XX XX



Customer: _____ Date: 28/10/2010 J.H.
 Order: _____ Check: 28/10/2010 J.B.
 Project: _____ Apprv: 28/10/2010 J.B.
 Qty: _____ Weight Kg: _____
 Title: THERMOSTATIC VALVES CRV3
 DN 80 - DN 300 SPARE PART CODES
 Drawing No: AG-1013-100-0-0000-0000-C
 Scale: _____
 Sheets: 1 of 2
 Format: A3
 File: Conjunto DN-125 PN10 RJ.iam

This drawing is owned by ROSSING JANSOON AB and prohibited its distribution and use by third parties without written authorization