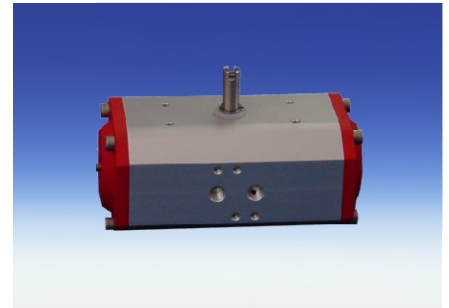
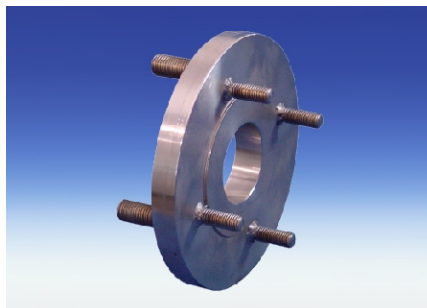
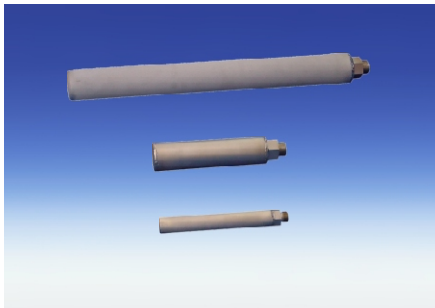
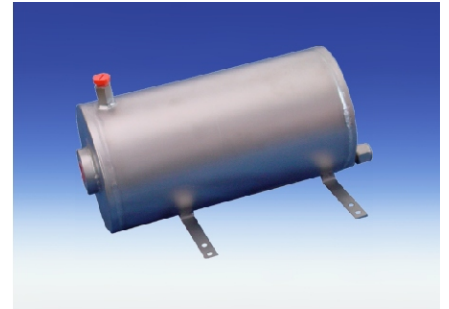
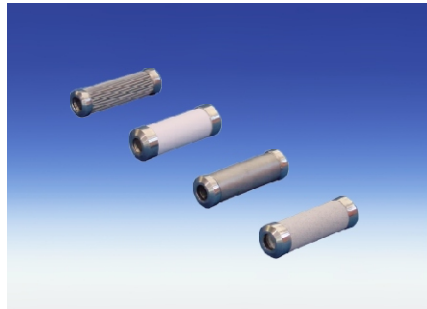
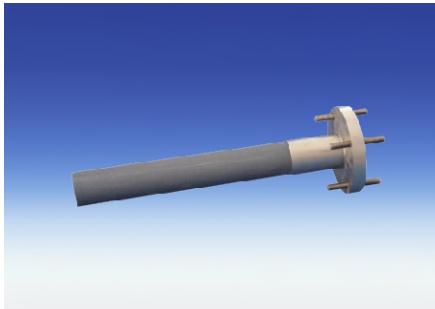


Accessories for Sample Gas Probe GAS 222



- Sample tubes
- In-situ filters
- Extensions

- Downstream filters
- Cal gas connections
- Adapter flanges

- Capacitive vessel
- Pneumatic actuators
- 3/2-way-solenoid valves
- Blowback controllers

Page 2 - 4

Page 8

Page 5 - 7

For general information, see data sheet "Sample gas probes GAS 222" DA461000.

Sample tubes, in-situ filters and extensions				222.10	222.11	222.30	222.35-U	222.15	222.17	222.20	222.21	222.31	222.35	222.20 DH	222.20 Atex	222.21 Atex	222.31 Atex	222.35 Atex	222.20 Atex2	222.21 Atex2	222.31 Atex2	222.35 Atex2	222.10 ANSI	222.11 ANSI/ CSA	222.30 ANSI/ CSA	222.35-U ANSI/ CSA	222.15 ANSI/ CSA	222.17 ANSI/ CSA	222.20 ANSI/ CSA	222.21 ANSI/ CSA	222.31 ANSI/ CSA	222.35 ANSI/ CSA	222.20 DH ANSI/ CSA	222.20 AMEX	222.21 AMEX	222.31 AMEX	222.35 AMEX	Type GAS			
<ul style="list-style-type: none"> Various materials Various dimensions Heated or nonheated extensions 																																									
Protection shield				Part No.:																																					
for in-situ filter 03				462223034								X	X				X	X			X	X			X	X												X	X		
for in-situ filter 04				462223044								X	X				X	X			X	X			X	X												X	X		
Extensions																																									
Type	Material	Mains Voltage	Length																																						
G3/4 nonheated	1.4571		0.2 m (0.7 ft)	4622230320200	X	X	X		X	X	X	X	X		X	X	X	X		X	X	X		X	X	X		X	X	X	X	X	X	X	X	X	X	X			
G3/4 nonheated	1.4571		0.4 m (1.3 ft)	4622230320400	X	X	X		X	X	X	X	X		X	X	X	X		X	X	X		X	X	X		X	X	X	X	X	X	X	X	X	X	X			
G3/4 nonheated	1.4571		0.5 m (1.6 ft)	4622230320500	X	X	X		X	X	X	X	X		X	X	X	X		X	X	X		X	X	X		X	X	X	X	X	X	X	X	X	X	X			
G3/4 nonheated	1.4571		0.7 m (2.3 ft)	4622230320700	X	X	X		X	X	X	X	X		X	X	X	X		X	X	X		X	X	X		X	X	X	X	X	X	X	X	X	X	X			
G3/4 nonheated	1.4571		1 m (3.3 ft)	4622230321000	X	X	X		X	X	X	X	X		X	X	X	X		X	X	X		X	X	X		X	X	X	X	X	X	X	X	X	X	X			
G3/4 nonheated	1.4571		1,2 m (3.9 ft)	4622230321200	X	X	X		X	X	X	X	X		X	X	X	X		X	X	X		X	X	X		X	X	X	X	X	X	X	X	X	X	X			
G3/4 nonheated	1.4571		1,5 m (4.9 ft)	4622230321500	X	X	X		X	X	X	X	X		X	X	X	X		X	X	X		X	X	X		X	X	X	X	X	X	X	X	X	X	X			
G3/4 nonheated	1.4571		2 m (6.6 ft)	4622230322000	X	X	X		X	X	X	X	X		X	X	X	X		X	X	X		X	X	X		X	X	X	X	X	X	X	X	X	X	X			
G1/2 nonheated	1.4571		0,25 m (0.8 ft)	4622235910250			X						X				X				X			X			X								X			X			
G1/2 nonheated	1.4571		0,5 m (1.6 ft)	4622235910500			X						X				X				X			X			X								X			X			
G1/2 nonheated	1.4571		0,7 m (2.3 ft)	4622235910700			X						X				X				X			X			X								X			X			
G1/2 nonheated	1.4571		1,5 m (4.9 ft)	4622235911500			X						X				X				X			X			X								X			X			
GF heated*	1.4571	230V	0.5 m (1.6 ft)	462223036						X	X	X																													
GF heated*	1.4571	230V	1 m (3.3 ft)	462223033						X	X	X																													
GF ANSI / CSA, heated*	1.4571	115V	0.5 m (1.6 ft)	462223036C1																																	X	X	X		
GF ANSI / CSA, heated*	1.4571	115V	1 m (3.3 ft)	462223033C1																																	X	X	X		
Controller for heated extension integrated into probe controller				46222292						X	X	X																								X	X	X			

* Mounting is only possible at a plain flange without G3/4 thread. Therefore a G has to be added to the part number, e.g. 4622220G.
It is not possible to add a heated extension after delivery.

Blowback			222.10	222.11	222.30	222.35-U	222.15	222.17	222.20	222.21	222.31	222.35	222.20 DH	222.20 AteX	222.21 AteX	222.31 AteX	222.35 AteX	222.20 AteX2	222.21 AteX2	222.31 AteX2	222.35 AteX2	222.10 ANSI	222.11 ANSI/ CSA	222.30 ANSI/ CSA	222.35-U ANSI/ CSA	222.15 ANSI/ CSA	222.17 ANSI/ CSA	222.20 ANSI/ CSA	222.21 ANSI/ CSA	222.31 ANSI/ CSA	222.35 ANSI/ CSA	222.20 DH ANSI/ CSA	222.20 AMEX	222.21 AMEX	222.31 AMEX	222.35 AMEX	Type GAS			
Capacitive vessel	Ambient temperature	Part No.:																																						
PAV 01		46222PAV	X	X	X				X	X	X			X	X	X		X	X	X		X	X	X				X	X	X				X	X	X				
Accessories for capacitive vessel																																								
ball valve		46222PAVKH	X	X	X				X	X	X			X	X	X		X	X	X		X	X	X				X	X	X				X	X	X				
2/2-way-MV 24VDC	15 to 130 °F	46222PAVMV1	X	X	X				X	X	X																													
2/2-way-MV 110V 50Hz	15 to 130 °F	46222PAVMV2	X	X	X				X	X	X																													
2/2-way-MV 220-230V 50/60Hz	15 to 130 °F	46222PAVMV3	X	X	X				X	X	X																													
2/2-way-MV 24VUC AteX II 2G/D EEx m II T4 IP65	15 to 140 °F	46222PAVMV4	X	X	X								X	X	X		X	X	X																					
2/2-way-MV 110VUC AteX II 2G/D EEx m II T4 IP65	15 to 140 °F	46222PAVMV5	X	X	X								X	X	X		X	X	X																					
2/2-way-MV 230VUC AteX II 2G/D EEx m II T4 IP65	15 to 140 °F	46222PAVMV6	X	X	X								X	X	X		X	X	X																					
2/2-way- AMEX 120V/ 60 Hz UL/CSA/FM Ex Div 2	15 to 130 °F	46222PAVMV8																					X	X	X				X	X	X			X	X	X				
2/2- Wege- AMEX 240V/ 60 Hz UL/CSA/FM Ex Div 2	15 to 130 °F	46222PAVMV9																					X	X	X				X	X	X			X	X	X				
self regulated heating system 115/230V 50/60Hz		46222PAVHZ1	X	X	X				X	X	X												X	X	X				X	X	X									
self regulated heating system 115-230V 50/60Hz AteX 2 II 3G EEx nA IIC T3 ; 3G c IIC T3		46222PAVHZ2																	X	X	X																			
self regulated heating system 115-230V 50/60Hz AteX 2 II 3G EEx nA IIC T4 ; 3G c IIC T4		46222PAVHZ3																	X	X	X																			
self regulated heating system AMEX,115-230V,50/60 Hz, CI1 Div 2 B,C,D,T3		46222PAVHZ4																																						
self regulated heating system AMEX,115-230V,50/60 Hz, CI1 Div 2 B,C,D,T4		46222PAVHZ6																																						
pressurized vessel support		462223502				X																			X															
Pneumatic actuators																																								
spring return, opened unpressurized		46222008	X	X					X	X				X	X		X	X				X	X					X	X					X	X					
spring return, closed unpressurized		46222030	X	X					X	X				X	X		X	X				X	X					X	X					X	X					
double action		46222009	X	X					X	X																														
limit switch		9008928	X	X					X	X																														
limit switch AteX II 2G/3D IIC T6 IP65 185°F		9008930												X	X		X	X																						
3/2-way-SV for pneumatic actuator control																																								
24VDC	15 to 130 °F	46222075	X	X					X	X																														
110V 50Hz	15 to 130 °F	46222076	X	X					X	X																														
230V 50Hz	15 to 130 °F	46222077	X	X					X	X																														
ATEX 24 V UC II 2G/D EEx m II T4	15 to 140 °F	46222078	X	X									X	X		X	X																							
ATEX 110 V UC II 2G/D EEx m II T4	15 to 140 °F	46222079	X	X									X	X		X	X																							
ATEX 230 V UC II 2G/D EEx m II T4	15 to 140 °F	46222080	X	X									X	X		X	X																							
AMEX 120V 60 Hz, NPT1/4",UL/CSA/FM-Ex Div.2	15 to 130 °F	46222050																					X	X				X	X					X	X					
AMEX 240V 60 Hz, NPT1/4",UL/CSA/FM-Ex Div.2	15 to 130 °F	46222056																					X	X				X	X					X	X					
5/2-way-SV for pneumatic actuator control	15 to 160 °F	9148000117	X	X					X	X																														
Blowback controller																																								
RSS 24VDC, IP65		46222199	X	X	X				X	X	X																													
RSS 115/230 VAC, IP65		46222299	X	X	X				X	X	X																													
RSS-MC integrated into probe controller cabinet		46222392							X	X	X																													

*max. pressure 6 bar

Details:

A) Blowback

Ordering note for capacitive vessel:

For attachment to GAS 222.11 / 30 / 35-U, a support is required.

Ordering note for pneumatic actuator:

If a blowback controller is required, only actuator P/N 46222030 is possible.

We advise the installation of a position indicator switch to control the pneumatic actuator.

Integrated blowback controller in the probe controller

In addition to the stand-alone blowback controller (RRS), an integrated blowback controller is optionally available

Blowback cycle time and actual blowback time can be adjusted via the keys and menu of the controller. The blowback and manual operation will be shown on the display. The blowback controller can be programmed via the keys – manual or automatic operation is possible. Besides the status output of the controller, a blowback status signal is provided. Blowback will be usually initiated by signals coming from the main controls.

If the position indicator switch is installed, the controller will use this input for the process logic.

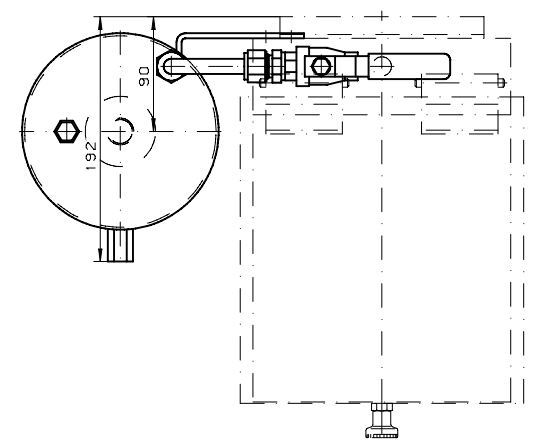
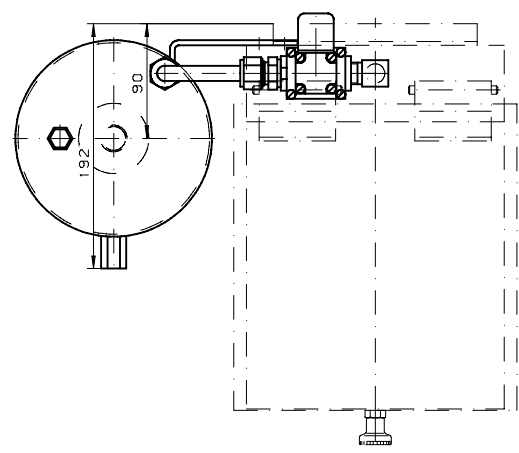
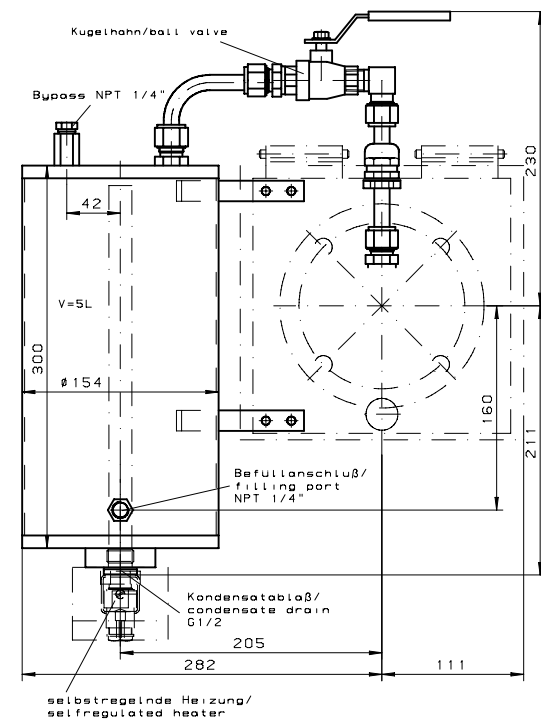
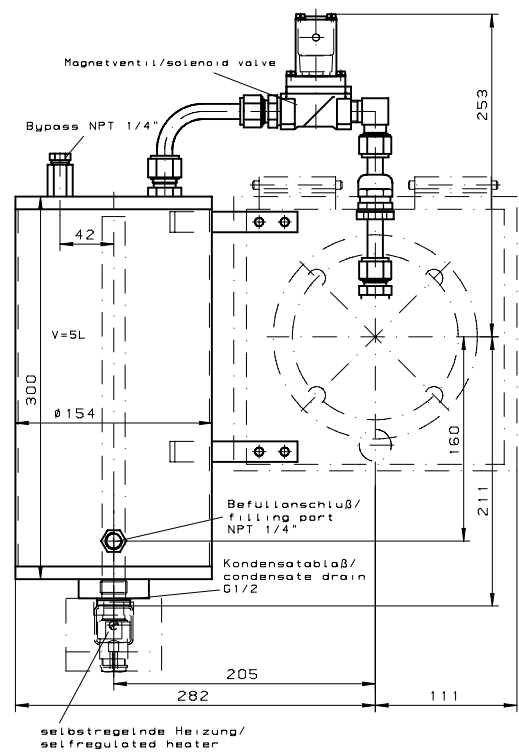
B) Hazardous Areas

Please note that installed accessories may change the approved category of the probe. Follow strictly the advices given in the installation- and operation manual and regard the marking on the type plate.

Sample Gas Probe GAS 222.xx Atex		
Model	with Accessories	resulting restricted area; marking
21 Atex, 31 Atex, 35 Atex	Pressure vessel PAV 01 (Part-No. 46222PAV with accessories)	II 1D / 2GD
21 Atex, 31 Atex,	In situ filter*, ceramics (Art.-Nr.:46222307 + 46222307F)	II 1D 3G / 2GD
20 Atex , 21 Atex,	Downstream filter*, ceramic (Part-No. 46222026 + 46222026P)	II 1D 3G / 2GD
20 Atex, 21 Atex,	Sample tube (Part-No. 46222001, 462220011, 46222006, 46222004, 46222016)	II 1G / 2GD
20 Atex, 21 Atex,	Sample tube**, ceramics (Part-No. 4622200205, 4622200210, 4622200215)	II 3G / 2GD
21 Atex, 31 Atex,	Pneumatic cylinder with end switch Atex (Part-No. 46222019)	II 1GD / 2G3D

* Accessory not suitable for sampling dust with extremely low ignition energy < 3mJ.

** When gases are sampled from Zone 2, ceramic sample tube must be used only if application related or process related electrostatic charging is eliminated.



max Betriebsdruck/operating pressure 10bar
max Betriebstemperatur/operating temperature 50°C

"Änderungen nur nach Rücksprache mit dem ATEXbeauftragten zulässig"

alle Kanten gratfrei:	ALLE RECHTE VORBEHALTEN	Maße ohne Toleranzangabe nach ISO 2768-mK	Maßstab 1:2,5	(Gewicht)
Oberflächenbear- beitungszeichen			Herzstaff	
<ul style="list-style-type: none"> ✓ = ✓ Ra ✓ x = ✓ Ra, Rz ✓ = ✓ Ra, Rz ✓ = ✓ Ra, Rz 		Datum: 05.07.2011 Name: Br-nissem Bearb: Gepr.	Benennung Druckluftbehälter/ capacitive vessel PAV 01	
			Zeichne -Nr 46/106-Z01-01-2	
			Art -Nr	
			Zust. Rnd. Datum Name Ers für	ARBEITSANWEISUNG



Downstream filter elements and further options				222.10	222.11	222.30	222.35-U	222.15	222.17	222.20	222.21	222.31	222.35	222.20 DH	222.20 Atex	222.21 Atex	222.31 Atex	222.35 Atex	222.20 Atex2	222.21 Atex2	222.31 Atex2	222.35 Atex2	222.10 ANSI	222.11 ANSI/ CSA	222.30 ANSI/ CSA	222.35-U ANSI/ CSA	222.15 ANSI/ CSA	222.17 ANSI/ CSA	222.20 ANSI/ CSA	222.21 ANSI/ CSA	222.31 ANSI/ CSA	222.35 ANSI/ CSA	222.20 DH ANSI/ CSA	222.20 AMEX	222.21 AMEX	222.31 AMEX	222.35 AMEX	Type GAS		
Downstream filter			Part no.:																																					
Material	O-Rings	Pore size																																						
Ceramics	Viton	3 µm	46222026	X	X			X	X	X	X			X	X	X			X	X			X	X			X	X	X	X			X	X	X					
Ceramics	Perfluorelastomer	3 µm	46222026P	X	X			X	X	X	X			X	X	X			X	X			X	X			X	X	X	X			X	X	X					
Sintered stainless steel	Viton	5 µm	46222010	X	X			X	X	X	X			X	X	X			X	X			X	X			X	X	X	X			X	X	X					
Sintered stainless steel	Perfluorelastomer	5 µm	46222010P	X	X			X	X	X	X			X	X	X			X	X			X	X			X	X	X	X			X	X	X					
Sintered stainless steel	Viton	0,5 µm	46222010F*	X	X			X	X	X	X			X	X	X			X	X			X	X			X	X	X	X			X	X	X					
Sintered stainless steel	Perfluorelastomer	0,5 µm	46222010FP*	X	X			X	X	X	X			X	X	X			X	X			X	X			X	X	X	X			X	X	X					
Pleated stainless steel	Viton	10 µm	46222011	X	X			X	X	X	X			X	X	X			X	X			X	X			X	X	X	X			X	X	X					
Pleated stainless steel	Perfluorelastomer	10 µm	46222011P	X	X			X	X	X	X			X	X	X			X	X			X	X			X	X	X	X			X	X	X					
Handle for downstream filter with micro glass fibre element			46222067	X	X			X	X	X	X			X									X	X			X	X	X	X			X	X	X					
Micro glass fiber with silicate binder	Viton		462220671	X	X			X	X	X	X			X									X	X			X	X	X	X			X	X	X					
Micro glass fiber with silicate binder	Perfluorelastomer		462220671P	X	X			X	X	X	X			X									X	X			X	X	X	X			X	X	X					
Closing handle with filter tube and filter wool	Viton		46222163	X	X			X	X	X	X			X									X	X			X	X	X	X			X	X	X					
Closing handle with filter tube and filter wool	Perfluorelastomer		46222163P	X	X			X	X	X	X			X									X	X			X	X	X	X			X	X	X					
Filter wool			46222167	X	X			X	X	X	X			X									X	X			X	X	X	X			X	X	X					
Set of O-rings Viton incl. grease			46222012	X	X			X	X	X	X			X	X	X			X	X			X	X			X	X	X	X			X	X	X					
Set of O-rings Perfluorelastomer incl. grease			46222024	X	X			X	X	X	X			X	X	X			X	X			X	X			X	X	X	X			X	X	X					
Further options																																								
Adapter flange ANSI 3"-150lbs			46222014	X	X	X	X	X	X	X	X	X	X	X	X	X	X	X	X	X	X	X	X	X	X	X	X	X	X	X	X	X	X	X	X	X	X	X	X	X
cal gas connection ø6mm			46222309	X	X	X	X	X	X	X	X	X	X	X	X	X	X	X	X	X	X	X	X	X	X	X	X	X	X	X	X	X	X	X	X	X	X	X	X	
cal gas connection ø6mm with check valve			46222311	X	X	X	X	X	X	X	X	X	X	X	X	X	X	X	X	X	X	X	X	X	X	X	X	X	X	X	X	X	X	X	X	X	X	X	X	
cal gas connection ø1/4"			46222336	X	X	X	X	X	X	X	X	X	X	X	X	X	X	X	X	X	X	X	X	X	X	X	X	X	X	X	X	X	X	X	X	X	X	X	X	
cal gas connection ø1/4" with check vavle			46222337	X	X	X	X	X	X	X	X	X	X	X	X	X	X	X	X	X	X	X	X	X	X	X	X	X	X	X	X	X	X	X	X	X	X	X	X	
fitting for sample gas port ø6mm			9008173	X	X	X	X	X	X	X	X	X	X	X	X	X	X	X	X	X	X	X	X	X	X	X	X	X	X	X	X	X	X	X	X	X	X	X	X	
fitting for sample gas port ø8mm			9008174	X	X	X	X	X	X	X	X	X	X	X	X	X	X	X	X	X	X	X	X	X	X	X	X	X	X	X	X	X	X	X	X	X	X	X	X	
fitting for back wash port ø12mm			9008369		X	X	X					X	X	X				X	X	X			X	X	X															
fitting for sample gas port ø1/4"			9008584	X	X	X	X	X	X	X	X	X	X	X	X	X	X	X	X	X	X	X	X	X	X	X	X	X	X	X	X	X	X	X	X	X	X	X	X	
fitting for sample gas port ø3/8"			9008583	X	X	X	X	X	X	X	X	X	X	X	X	X	X	X	X	X	X	X	X	X	X	X	X	X	X	X	X	X	X	X	X	X	X	X	X	
fitting for back wash port ø1/2"			9028033		X	X	X					X	X	X				X	X	X			X	X	X															

* Prices and delivery time on request